

# PERGOLA ULTRA LIGHT

Discover the *Ultra Light* model, the perfect blend of elegance, durability and affordability. Available in two sizes, this 100% resistant aluminum pergola offers a sleek and modern design to complement any outdoor space. Don't spend another summer without it: create unforgettable memories, protected from the elements. Take advantage of the comfort of a pergola that adapts to you, and not the other way around!



## General

**10 ft x 10 ft and 13 ft x 10 ft free standing format**

**2 colors: white and black**

**Clean & Modern look**

## Superior quality

100% powder coated aluminium. Rust resistant.

## Warranty

5-year limited warranty on structure

## Features

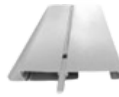
- Crank handle louver operation (very easy and fluid)
- Louvers can be angled from 0 to 90 degrees
- Posts can reach a maximum height of 8.3 feet
- The height is definitive at the time of installation
- Integrated gutters
- Water drainage concealed in legs
- Watertight joints
- Designed in Canada
- Made with imported parts from Asia
- Snowload: 150 kg per square meter (30 pounds per square foot). We strongly recommend keeping the louvers open in winter to prevent damage from freezing and thawing.
- Wind resistance: 55 mph

A minimum clearance of 9 inches is required between the bottom of the beam and the top of the louvers for installation.

## Shipping Information

Packed in cardboard boxes

## Specifications



**Louvers**

5,5 x 1,37 x 0,039 inch  
(14 x 3,5 x 0,12 cm)



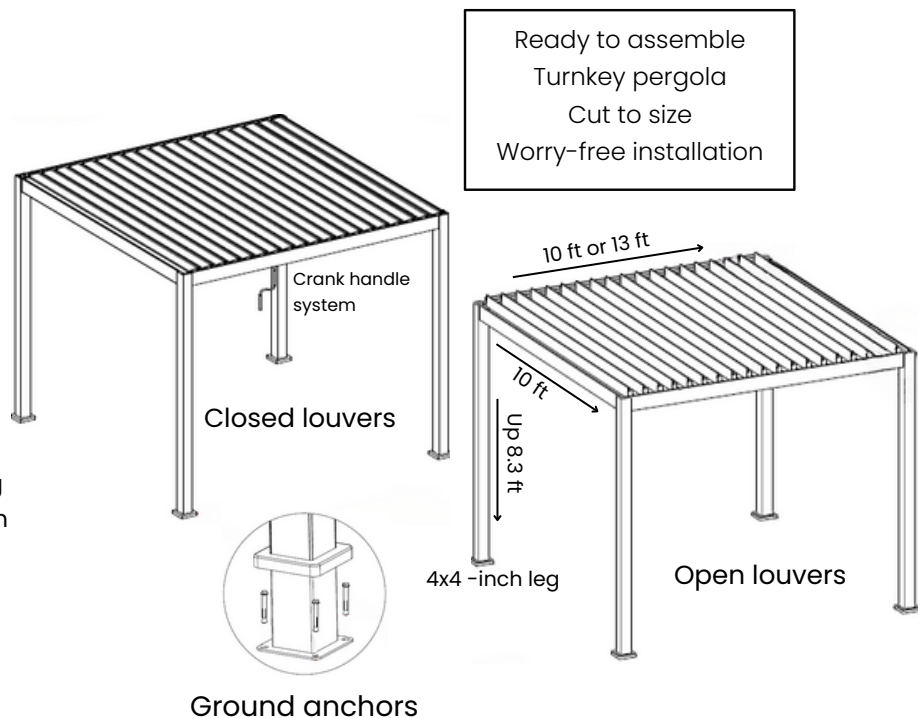
**Beams & Gutters**

5,1 x 3,5 x 0,05 inch  
(13 x 9 x 0,15 cm)



**Posts**

4 x 4 inch  
(10 x 10 cm)



info@solpergolas.com  
www.solpergolas.com/en

# PERGOLA LIGHT

Stylish and budget-friendly, the *Light* model blends form and function. With its sleek design and clean lines, this pergola adds a contemporary touch to your setup. The built-in gutter system ensures efficient rainwater drainage so that you can enjoy your outdoor space worry-free.



## General

**Made-to-measure project**

**3 standard colors: white, black and anthracite grey**

**Custom colors available (upcharge)**

**Clean & Elegant look**

**Superior quality**

100% powder coated aluminium. Rust resistant.

**Warranty**

Lifetime limited warranty on structure

5-year limited warranty on gear box or motor

**Features**

- Crank handle louver operation
- Motorized system (**upcharge**)
- Louvers can be angled from 0 to 90 degrees
- Posts can reach a maximum height of 12 feet
- The height is definitive at the time of installation
- Integrated gutters
- Water drainage concealed in legs
- Watertight joints
- Several design options
- Designed in Canada
- Made with imported parts from Asia
- Snowload: 180 kg per square meter (37 pounds per square foot). We strongly recommend keeping the louvers open in winter to prevent damage from freezing and thawing.
- Wind resistance: 73 mph

A minimum clearance of 10 inches is required between the bottom of the beam and the top of the louvers for installation.

**Shipping Information**

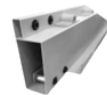
Packed in plywood crates

## Specifications



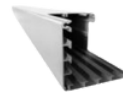
**Louvers**

6.6 x 1.37 x 0.05 inch  
(16.8 x 3.5 x 0.15 cm)



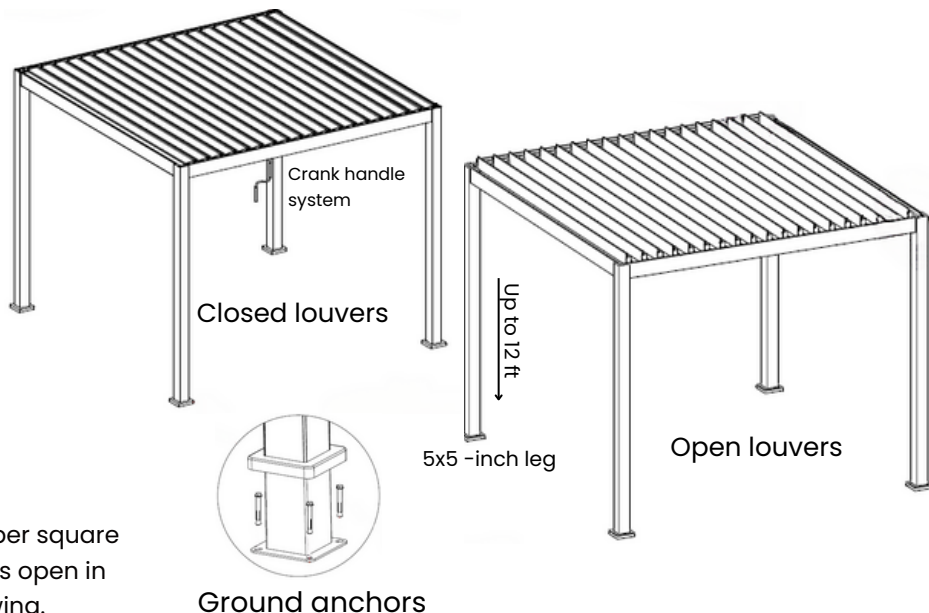
**Beams & Gutters**

5.5 x 3.3 x 0.05 inch  
(14 x 8.5 x 0.15 cm)



**Posts**

5 x 5 inch  
(13 x 13 cm)



info@solpergolas.com  
www.solpergolas.com/en

# PERGOLA LUXE

The *Luxe* model stands out with motorized louvers, providing seamless control and effortless adjustments to suit your needs. Whether letting in light or providing perfect shade, it complements any outdoor setting. Its impressive, sophisticated design adds a touch of luxury to your space. The weather-ready built-in gutter system means you can enjoy your pergola in comfort for up to three seasons a year.



## General

### Made-to-measure project

**3 standard colors: white, black and anthracite grey**

**Custom colors available (upcharge)**

### Chic & Impressive look

### Superior quality

100% powder coated aluminium. Rust resistant.

### Warranty

Lifetime limited warranty on structure

5-year limited warranty on motor

### Features

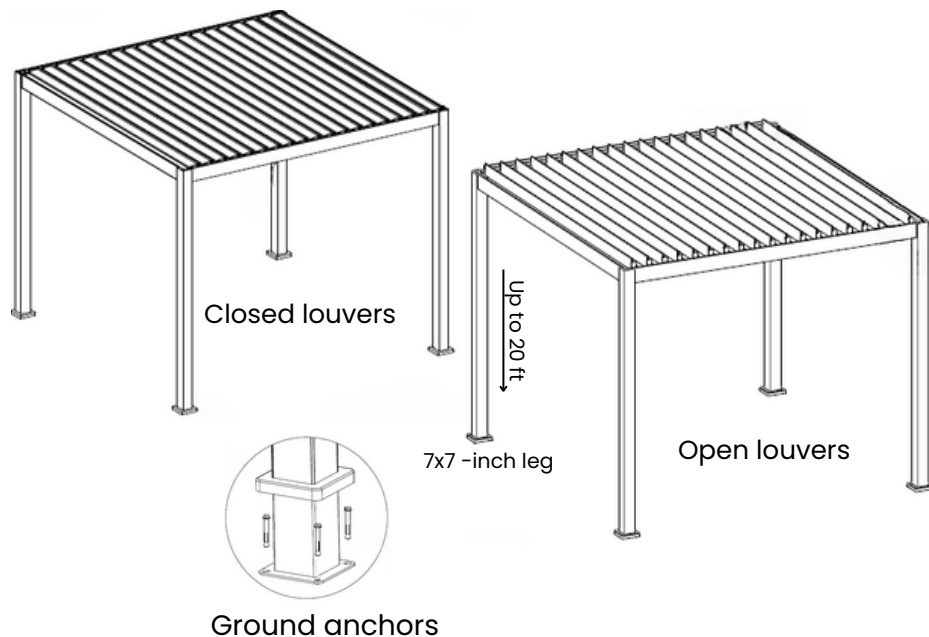
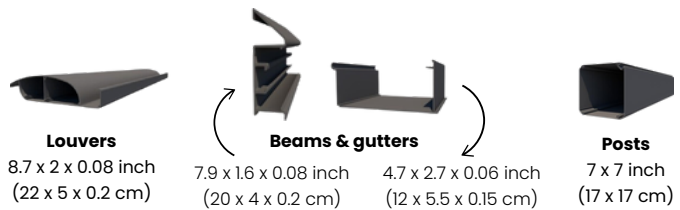
- Motorized system
- Louvers can be angled from 0 to 120 degrees
- Posts can reach a maximum height of 20 feet
- The height is definitive at the time of installation
- Integrated gutters
- Water drainage concealed in legs
- Watertight joints
- Several design options
- Designed in Canada
- Snowload: 225 kilograms per square meter (46 pounds per square foot). We strongly recommend keeping the louvers open in winter to prevent damage from freezing and thawing.
- Wind resistance: 120 mph

A minimum clearance of 12 inches is required between the bottom of the beam and the top of the louvers for installation.

### Shipping Information

Packed in plywood crates

## Specifications



info@solpergolas.com  
www.solpergolas.com/en