

PERGOLA LIGHT

Stylish and budget-friendly, the *Light* model blends form and function. With its sleek design and clean lines, this pergola adds a contemporary touch to your setup. The built-in gutter system ensures efficient rainwater drainage so that you can enjoy your outdoor space worry-free.



General

Made-to-measure project

3 standard colors: white, black and anthracite grey

Custom colors available (upcharge)

Clean & Elegant look

Superior quality

100% powder coated aluminium. Rust resistant.

Warranty

Lifetime limited warranty on structure

5-year limited warranty on gear box or motor

Features

- Crank handle louver operation
- Motorized system (**upcharge**)
- Louvers can be angled from 0 to 90 degrees
- Posts can reach a maximum height of 12 feet
- The height is definitive at the time of installation
- Integrated gutters
- Water drainage concealed in legs
- Watertight joints
- Several design options
- Designed in Canada
- Made with imported parts from Asia
- Snowload: 180 kg per square meter (37 pounds per square foot). We strongly recommend keeping the louvers open in winter to prevent damage from freezing and thawing.
- Wind resistance: 73 mph

A minimum clearance of 10 inches is required between the bottom of the beam and the top of the louvers for installation.

Shipping Information

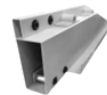
Packed in plywood crates

Specifications



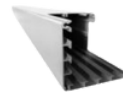
Louvers

6.6 x 1.37 x 0.05 inch
(16.8 x 3.5 x 0.15 cm)



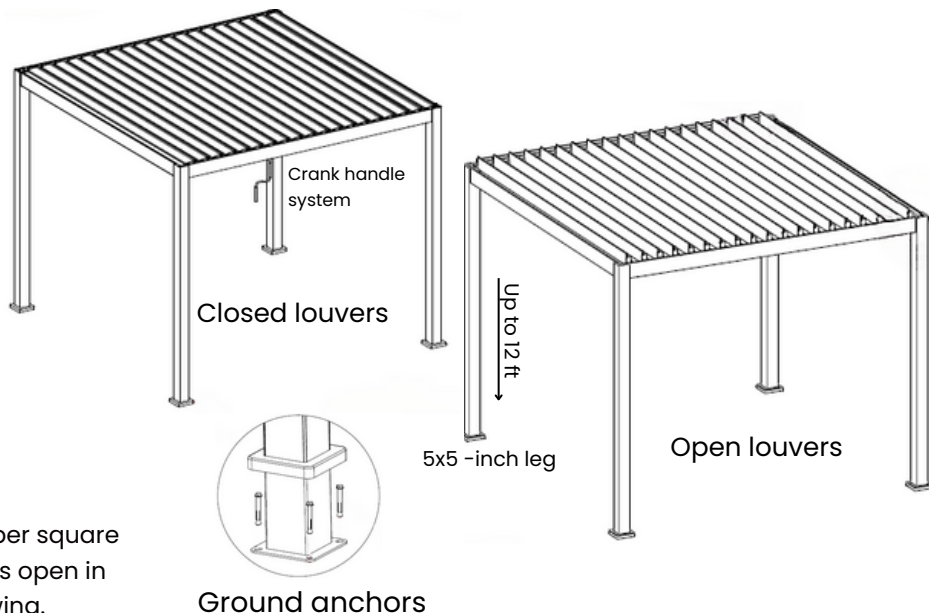
Beams & Gutters

5.5 x 3.3 x 0.05 inch
(14 x 8.5 x 0.15 cm)



Posts

5 x 5 inch
(13 x 13 cm)



info@solpergolas.com
www.solpergolas.com/en